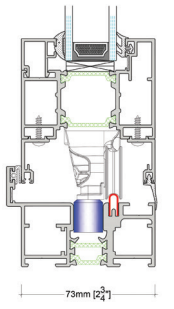


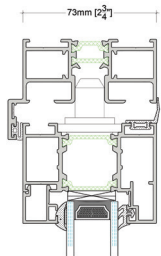


PLUSFOLD

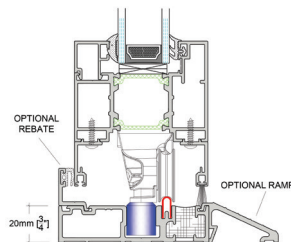
A European designed system offering above ground bottom running with multiple threshold options. The hardware and system are bespoke designed to give maximum carry capacity, whilst offering slim sightlines, oversized doors and minimum profiles.



Standard threshold detail

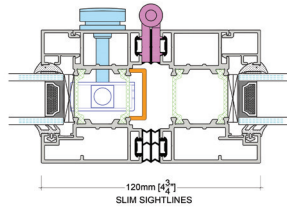


Head detail



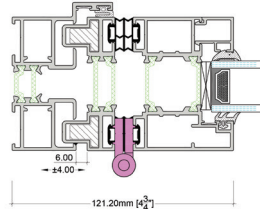
Low threshold detail

Intermediate detail
integrated lock



120mm [4 3/4"]
SLIM SIGHTLINES

Outer frame detail with adjustable jamb



121.20mm [4 3/4"]

PLUSFOLD



The system is easily installed, the doors can open in or out using the same profiles, the sash and outer frame are both the same depth and give excellent thermal values. It is a truly inline system with bespoke hardware resulting in a high performance and very desirable, attractive door.

- Maximum weight 120KG per panel
- Maximum height 3000mm
- Maximum width 1200mm
- Multiple threshold options
- Adjustable jamb option
- Ultra smooth bottom running
- Slim sightlines
- Dual Colour & Special Finishes available
- Intermediate doors have concealed shoot bolt locking with single point handle. Key locking optional
- Option for access from outside on any configuration
- Colour matched handles and magnetic door holders
- Every conceivable configuration achievable up to a maximum 7Left 7Right with bottom rolling
- Opening either in or out using the same profiles
- 30mm polyamide thermal break for increased thermal values: Down to 1.4 W/(m².K)*
- Inline system with sash and outer frame the same depth
- Document Q Compliant, Including PAS 24 and BS6375 Part 1 Weather Testing

* Depending on glass specification

WEATHER RESISTANCE

All of our systems are tested to guarantee the very best performance in water tightness, air permeability and wind loads, achieving the maximum result in each category.

THERMAL PERFORMANCE

Energy efficiency is a vital element in building design, with demands made by both the architect and end-user – to reduce environmental impact and heating costs. Our systems are designed with high levels of insulation, creating comfortable homes right across the world.

MODERN AESTHETICS

We manufacture bespoke window, door and façade systems tailored to each individual project. The designs balance aesthetics with functionality and technical requirements.

UNLIMITED COLOUR RANGE

To add colour to the interior and exterior of the building, the aluminium frame can be powder coated or anodised on both sides, with a dual-colour option. For powder coating, choose from any RAL colour with metallic, textured and wood finishes also available.

LONG-LASTING PERFORMANCE

Aluminium is one the most durable and sustainable materials available. It has the strength and resistance to last a lifetime.

SUSTAINABLE SPIRIT

We are committed to minimising waste and the environmental impact of its products and manufacturing processes, through the use of sustainable raw materials and products, and the limitless recyclability of aluminium.

Our continued commitment to innovation allows us to offer high value-added products that maximise energy efficiency, thermal and acoustic performance and weather resistance.

