



Duragrain surface finish

Decor overview



Contents



4 Concrete



6 Beige



7 Mocca



8 Grigio



9 Grigio Scuro



10 Rusty Steel



12 Bamboo



13 Burned Oak



14 Cherry



15 Nature Oak



16 Pine



18 Rusty Oak



19 Noce Sorrento Balsamico



20 Noce Sorrento, plain



22 Sapele



24 Sheffield



25 Teak



28 Weathered Look



28 Terra Walnut



30 Colonial Walnut



31 White Brushed



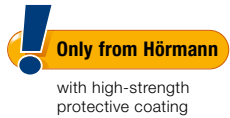
32 White Oak



33 White Oiled Oak



34 Whitewashed Oak



Duragrain surface finish

Final decor coating with high-strength protective paint

The highly scratch-resistant and UV-resistant decor printing guarantees a permanently beautiful door style. The 24 decors are detailed, natural and colourfast. A harmonious, vibrant surface look is created by repeating the decor every 800 to 1300 mm (depending on the decor) and by offsetting the decor between the sections.

Duragrain doors are generally supplied in Grey white, RAL 9002, on the inside of the door. When the door is opened, a thin Grey white stripe can be seen between the sections on the outside.

Side frames and fascia panels are delivered in Woodgrain, Traffic white RAL 9016 as standard. Optionally, fascia panel and frame cladding are available in an NCS colour matching the decor (see colour stripes with designation on the decor details pages from page 4) or in an individually selected RAL colour.

Decor detail view



- 1 Decor
- 2 Colour of optional fascia panel and frame cladding

Note

The colours and surfaces shown are subject to the limitations of the printing process and cannot be regarded as binding. Please consult with your local Hörmann specialised dealer.



Door leaf design

- 1 42 mm thick, double-skinned LPU steel sections with PU infill
- 2 Surface hot-galvanized on the interior and exterior
- 3 Sections primed on the interior and exterior in Grey white, RAL 9002
- 4 UV-resistant decor printing on the coating of the outside of the sections ensures a natural, colourfast decor appearance
- 5 The scratch-resistant final Duragrain coating provides the exterior of the decor with continuous protection against effects of the environment, keeping the door beautiful for years to come

* The 5-year guarantee refers to the colour fastness. The complete warranty conditions can be found at: www.hoermann.com

DURAGRAIN

Concrete



S 3500-N

Concrete



DURAGRAIN

Beige



S 3502-Y

Mocca



DURAGRAIN

Grigio



S 4500-N

Grigio Scuro

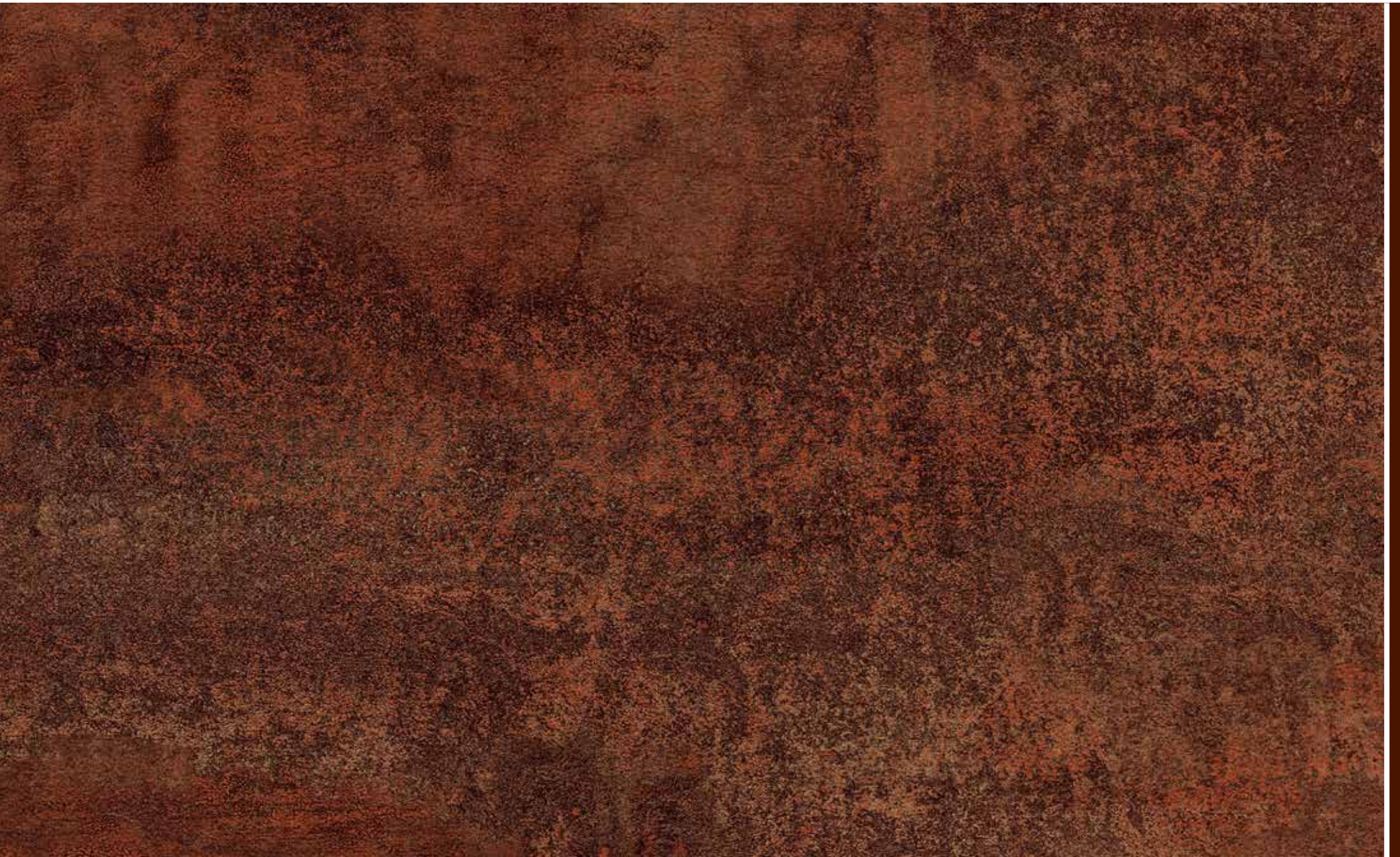


DURAGRAIN

Rusty Steel



Rusty Steel



DURAGRAIN

Bamboo



S 4040-Y20R

Burned Oak



DURAGRAIN

Cherry



S 5040-Y70R

Nature Oak



DURAGRAIN

Pine



S 3020-Y20R

Pine



DURAGRAIN

Rusty Oak



S 6030-Y80R

Noce Sorrento Balsamico



DURAGRAIN

Noce Sorrento, plain



Noce Sorrento, plain



DURAGRAIN

Sapele

S 7020-Y80R

Sapele



DURAGRAIN

Sheffield



S 3005-Y50R

Teak



DURAGRAIN

Weathered Look



Weathered Look



DURAGRAIN

Terra Walnut



S 8010-Y50R

Terra Walnut



DURAGRAIN

Colonial Walnut



S 5040-Y50R

White Brushed



S 1500-N

DURAGRAIN

White Oak



S 2000-N

White Oiled Oak



DURAGRAIN

Whitewashed Oak



Whitewashed Oak





Hörmann is the only manufacturer worldwide that offers you a complete range of all major construction components from a single source. We manufacture in highly specialised factories using state-of-the-art production technologies. Due to the comprehensive sales and service network in Europe and our presence in America and Asia, Hörmann is your strong international partner for high-quality construction components. "Quality without Compromise".

GARAGE DOORS

OPERATORS

INDUSTRIAL DOORS

LOADING TECHNOLOGY

DOORS

FRAMES

PERIMETER PROTECTION SYSTEMS

HÖRMANN