

Intelligent Security & Fire Protection

Fire Shutters



SeceuroFire
Fire Protection



Jun 2021



Four Integrity Ratings...





SeceuroFire

Fire Shutter

30, 60, 120, 240 minute fire ratings available.

The SeceuroFire Fire Shutter is an electrically operated vertical fire shutter, consisting of a 75 mm scrolled curtain and galvanised steel box assembly and guide rails. Its design allows for both face or reveal installations and the box, curtain, guide rails and bottom rail can all be powder coated as an optional extra.

Designed to be a security barrier during normal use and to be closed automatically during an emergency situation or test. In the event of receiving a fire alarm signal the shutter will perform a powered descent to create a fire resistant barrier. If power failure occurs, the shutter will close using the intelligent battery backup feature.

✓ Size limitations

	Minimum (mm)	Maximum (mm)
Width	800	5710
Height	800	4700

Maximum sizes can vary according to integrity rating, please check for confirmation and refer to Technical Data sheets for further information.

✓ Approved standards

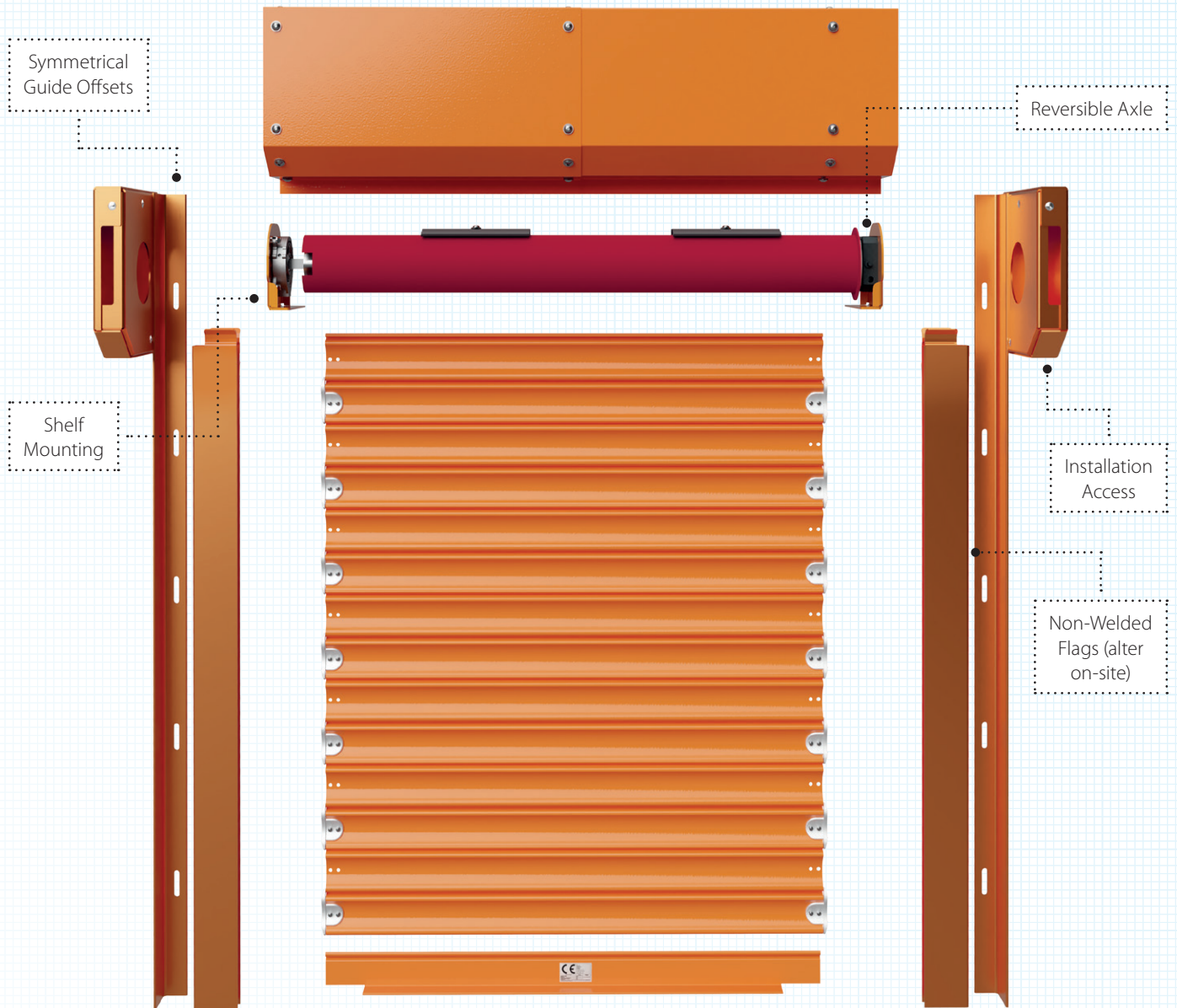
The SeceuroFire Fire Shutter has been tested to BS EN 16034: shutters product standard, fire resisting characteristics and BS EN 13241: shutters product standard, performance characteristics. The product was tested and approved by Warrington Fire, report 413395.



✓ Product performance

This product is uniquely capable of providing specifiers with a choice of 30, 60, 120, or 240 minutes integrity performance in accordance with the standards listed above.





Key Features

- ✓ Greater access to end plate fixtures
- ✓ Fast and easy attachment of axle with two shelf bracket and easy access bolts
- ✓ Increased range of sizes
- ✓ Range of fire ratings (including 30 minute)
- ✓ No more motor handing, easily interchangeable on site
- ✓ Non-welded assembly design allowing post order alteration of guide orientations
- ✓ Increased range of hood configurations
- ✓ Symmetrical design of guide offsets
- ✓ Fixing kits available
- ✓ Can be used daily as a shutter
- ✓ A full range of RAL colours available



Maintenance Recommendations

There is a requirement under The Regulatory Reform (Fire Safety) Order 2005 for companies to ensure fire safety equipment is maintained and a record kept.

- **Weekly:** Check all the system for correct operation
- **6 Months:** Inspections and test of the systems by a competent engineer
- **Annually:** Full inspections and test of the systems by a competent engineer, clean self-contained detectors and check or replace batteries

FIRE SHUTTER SPECIFICATIONS

- Testing & Standards
- Tested and approved by Warringtonfire
- BSEN 16034
- BSEN 13241
- Available in 30, 60, 120, or 240 minutes rating

TECHNICAL DRAWINGS

Full technical CAD drawings available.

BOTTOM RAIL

- T Sectioned steel bottom slat
49 mm high x 74 mm deep

OPTIONAL EXTRAS

Localised sensors such as smoke and heat detectors, a range of audio visual devices and emergency retract switches can be connected to the panels using a 24 V DC supply from the panel.

- Key switch

CURTAIN

- A single skin 75 mm scrolled
- The product is available galvanised as standard or powder coated to RAL or BS colour at extra cost

Intelligent Features

CONTROLS

- Four fully tested control options with separate battery backup (see pages 6-7)

GUIDE RAILS

65 mm, 75 mm or 100 mm deep, depending upon shutter width mounted on steel angles for fixing. Available for face or reveal installations.

FINISH

Galvanised as standard or powder coated to RAL or BS colours at extra cost.

CHAMFERED SHUTTERBOX

Boxes are supplied in sleeved sections to allow for expansion starting from 250 mm endplate, depending on shutter height and component integrity requirements

MOTOR

The Fire Shutter is powered using a 240 V AC tubular motor which is supplied as standard with a 2.5 m 4 core cable.

MODULAR DESIGN

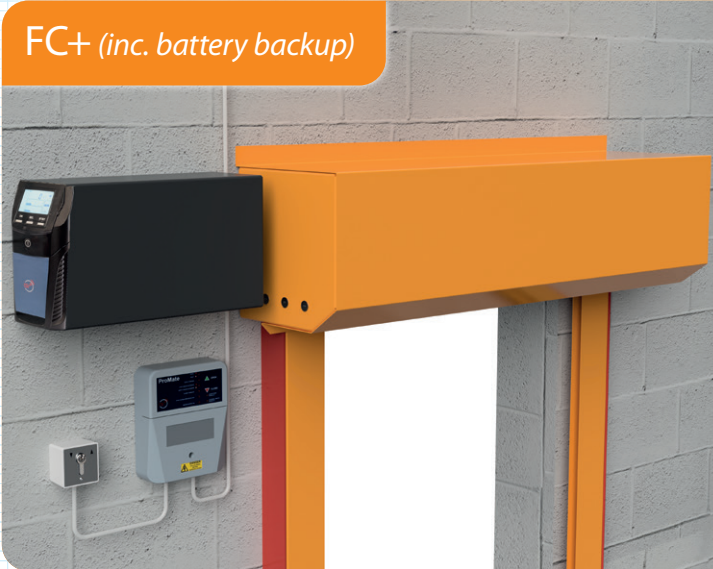
Post order alteration enabled due to modular design features of the redesigned and redeveloped shutter.



SeceuroFire Fire Shutter

Battery Backup & Control Options

FC+ *(inc. battery backup)*



FC+ is a simple plug and play option, offering quick and easy configuration on site, particularly useful when wiring into an existing building management system. It has a small relay unit which is ideal for tight installations where space is restricted. The panel comes with simple control options to operate the shutter and can be directly plugged into the battery backup unit provided.

The SF1 Fire Shutter Control Panel allows the option to add accessories, such as local heat sensors, and alarm equipment. This option is ideal for projects with no existing building fire management system, or where the shutter is over an egress route and needs local heat detection. The panel is easily configurable with the battery backup unit, and also features built in audio and visual warnings.

SF1 *(inc. battery backup)*



Each of our control and battery backup combinations have been fully tested through the UKAS accredited test body, and are simple to install thanks to our quick installation guides. Battery back-up brackets are also available, making mounting even easier. Covering a wide range of installation scenarios, our control options also allow for additional audio and visual safety devices to be specified.

Key to compliance, our proven and reliable hibernation feature allows the shutter to close in an emergency situation – up to 30 days* after power failure. Not only that, but the BBU houses technology that slows energy depletion, meaning that there is always enough energy to close the product without the risk of a failure to close.

**based on the battery backup unit being fully charged and not being used as a normal shutter, the fire system should be tested weekly and any faults fixed prior to the next test.*

SFP (inc. battery backup)



The SFP Fire Control Panel also gives the option for additional accessories, allowing more specific set up with the controls and alarm. Further to this the controller also features audio/visual warnings, with the ability to programme features such as close delay.

As well as delivering the same benefits as the SFP, the SFP+ offers the option of a closing override button, allowing the user to override the closing action temporarily in an emergency situation, allowing for escape.*

**Under exceptional circumstances whereby health and safety have special requirements and only when deemed necessary by the fire officer.*

SFP+ (inc. battery backup)



Your SeceuroFire Checklist

Remember, only SeceuroFire offers all of the following:

- ✔ **A name you can trust**
When buying a SeceuroFire Shutter you can be reassured by the values behind the name. SWS UK is an ISO 9001:2008 assessed company. SWS UK is a subsidiary of Stella Group.
- ✔ **A perfect fit**
With every SeceuroFire Shutter made to measure we can meet your design needs.
- ✔ **Manufactured in the UK**
Using the latest machinery and equipment, all SeceuroFire Shutters are proudly manufactured and assembled in the UK.
- ✔ **Multiple options**
A choice of 30, 60, 120 & 240 minute integrity ratings provide a wide choice of solutions for all fire protection requirements.
- Fully tested**

 - ✔ Conforming to UK and European standards for the property owner's peace of mind.
- Neat design**

 - ✔ All motors are within the housing which is available in a range of sizes to minimise space requirements.
- Local supply and installation**

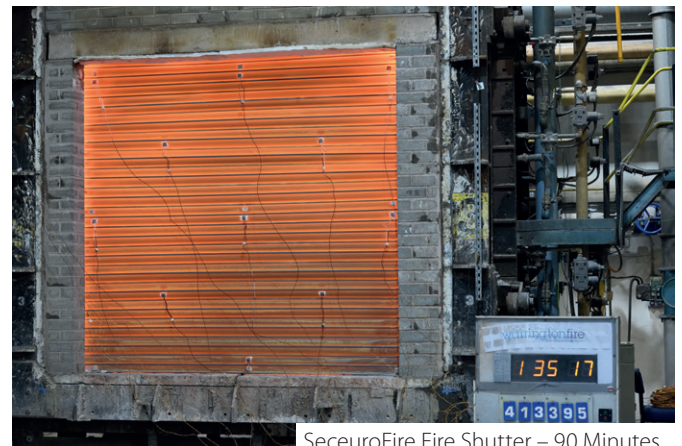
 - ✔ A national network of trained installers.

Product Testing

The SeceuroFire Fire Shutters were tested and assessed by Warringtonfire. The product is fitted on the furnace side replicating the most severe condition and the temperature of the furnace is increased to 1200°C at a rate defined by the product standards.



SeceuroFire Fire Shutter – 30 Minutes



SeceuroFire Fire Shutter – 90 Minutes

Peace-of-Mind Warranties

All SeceuroFire Shutters are guaranteed against defect of material or workmanship by SWS UK, subject to correct installation, maintenance and operation, for a period of 12 months from the date of purchase.




Raising Standards
Safety Assured